



FLOOR

THEORETICAL BOLD™

COLORBODY™ PORCELAIN WITH REVEAL IMAGING®



AMERICAN OLEAN®
PROVEN IN TILE™

AMERICANOLEAN.COM

THEORETICAL BOLD™

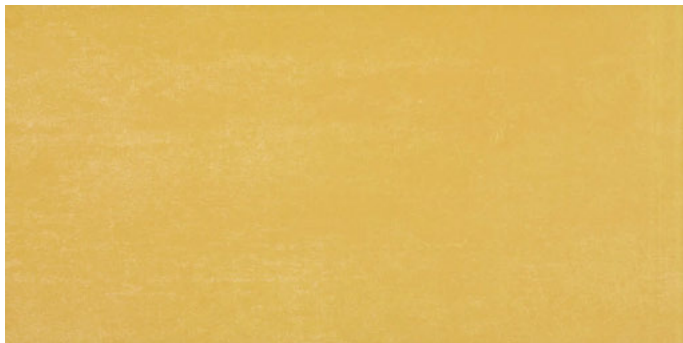
Theoretical Bold by American Olean® makes a splash in bright, spirited colors. Designed to complement the existing Theoretical™ series, this collection features the same light graphic variation for visual depth and richness and can be used on floors or walls for an eye-catching pop of color. Available in six standout hues, Theoretical Bold is sure to turn heads.

Cover photo features Theoretical Bold Formula Blue 12 x 24 and Theoretical™ Ideal Beige 12 x 24 on the floor and wall, with Theoretical Creative Gray 2 x 2 mosaic on the floor.
Above photo features Theoretical Bold Formula Blue 12 x 24 and Theoretical Ideal Beige 12 x 24 on the wall.

THEORETICAL BOLD™

COLORBODY™ PORCELAIN WITH REVEAL IMAGING®

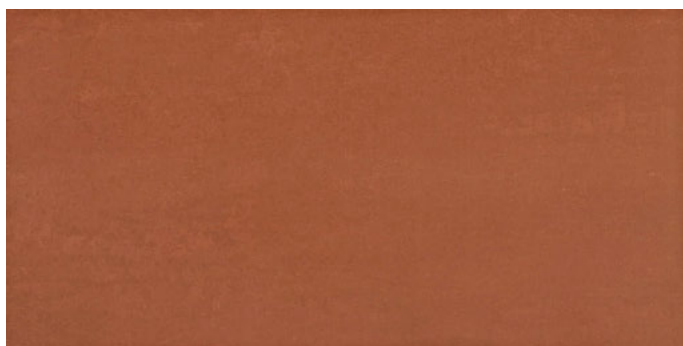
FLOOR TILE



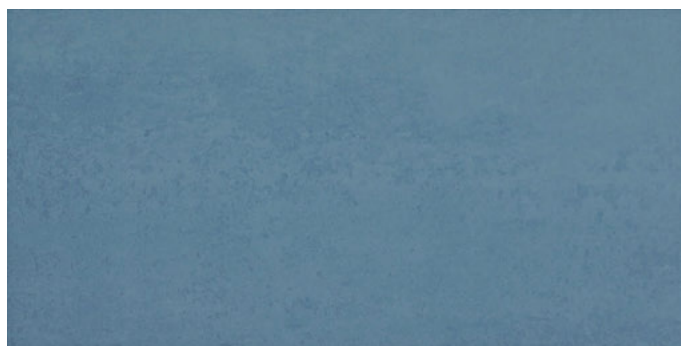
PRIMARY YELLOW TH84



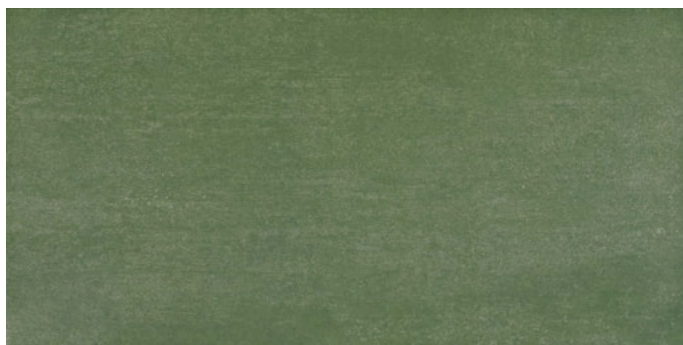
AUTHENTIC ORANGE TH88



ACADEMIC RED TH89



FORMULA BLUE TH86



GENUINE GREEN TH85





ELECTRIC BLUE TH87

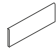
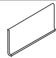

THEORETICAL BOLD™

COLORBODY™ PORCELAIN WITH REVEAL IMAGING®

SIZES

			THICKNESS	SQ. FT./ CARTON	PIECES/ CARTON
	24 x 24 Floor Tile *	(23-5/8" x 23-5/8") (59.44 cm x 59.44 cm)	3/8"	15.20	4
	12 x 24 Floor Tile *	(11-5/8" x 23-5/8") (29.56 cm x 59.44 cm)	3/8"	15.12	8

TRIM

DESCRIPTION	NUMBER	SIZE	SHAPE
Floor Bullnose	P-43C9	3 x 12	
Cove Base ●	P-36C9TB	6 x 12	
Cove Base Outcorner ●	PC-36C9TB	1 x 6	

Floor bullnose and cove base trim are intended to coordinate with floor tile in the standard 90-degree installation position. Cove base and cove corner trim are suitable for non-freezing climates only.

* Modular sizes ● Cove trim shapes are made to order with extended lead time.

INSTALLATION & PRICING

RECOMMENDED GROUT JOINT:

Floor: 1/8" (3/16" when multiple sizes are installed in a modular pattern, and/or when installing tile with a length 15" or greater in a staggered brick-joint pattern; overlap should not exceed 33%.)

Mosaic: 1/8"

RELATIVE PRICING: Medium to High

SHADE VARIATION



PERFORMANCE CHARACTERISTICS

	ASTM#	FLOOR RESULT
Water Absorption	C373	< 0.5%
Breaking Strength	C648	> 275 lbs
Scratch Hardness	MOHS	8.0
Chemical Resistance	C650	Resistant
Abrasion Resistance	C1027	-N/A-

For additional information on test results, visit us at: americanolean.com/information/TestResults.

USAGE

FLOORS	WALLS	COUNTERTOPS
F	W	C

APPLICATIONS

	TARGET DCOF WET	SUITABLE
Dry & Level – Interior Floor	N/A	●
Wet & Level – Interior Floor	≥ 0.42	●
Shower Floors (Residential or Light Commercial)	≥ 0.42	
Exterior Floor Applications (including pool decking & other wet areas with minimal footwear)	≥ 0.60	
Ramps & Inclines	≥ 0.65	
Walls/Backsplashes	N/A	●
Countertops	N/A	●
Pool Linings	N/A	

A DCOF value of ≥ 0.42 is the standard for tiles specified for level interior spaces expected to be walked upon when wet, as stated in ANSI A137.1-2012, Section 9.6. For more information about DCOF and the DCOF AcuTest™, visit americanolean.com/DCOF.

APPLICATION NOTES:

Suitable for exterior applications in freezing and non-freezing climates, when proper installation methods are followed.

NOTES

Since there are variations in all fired ceramic and natural products, tile and trim supplied for your particular installation may not match samples. Final confirmation should be made from actual tiles and trim prior to installation. Manufactured in accordance with ANSI A137.1 standards.

Not for use on ramps. Water, oil, grease, improper drainage and certain footwear can create slippery conditions. Floor applications expected to be exposed to these conditions require extra caution in product selection.

For additional information refer to "Factors to Consider" at: americanolean.com/Factors.

Special consideration needs to be given when installing tiles greater than 15 inches. Please refer to americanolean.com/LargeTiles for more information.

Special care should be taken when grouting with dark pigmented colors. A grout release is recommended to prevent finely powdered pigments from lodging in the pores of the surface. Use of a latex modified thin-set is recommended for installation.



POST-CONSUMER
RECYCLED MATERIALS



REVEAL IMAGING®



PRE-CONSUMER
RECYCLED MATERIALS



TRU-EDGE™



MADE IN THE U.S.A.



CERTIFIED
PORCELAIN
TILE

All or select items within this series meet the requirements for these qualifications. For more information visit americanolean.com.



Naturally, many of our products can help you earn LEED™ credits.

888.AOT.TILE

©2017 AMERICAN OLEAN (06/17)



AMERICAN OLEAN®
PROVEN IN TILE™