

method™

COLORBODY™ PORCELAIN TILE



AMERICAN OLEAN®
FREEDOM OF EXPRESSION™



CERTIFIED
PORCELAIN
TILE
0.5% or less water absorption



PRE-CONSUMER
RECYCLED MATERIALS



TRU-EDGE



EXTERIOR
PRODUCT

method™

Method™ by American Olean® pays homage to the design process with colors, sizes and textures that flow seamlessly from interior to exterior spaces. A neutral, yet rich color palette provides the backdrop for fluid movement and graceful visual detail. The line includes six design-inspired colors: Structure Cream, Process Beige, Strategic Brown, Taupe Technique, Khaki Approach, and System Sable. Three textures—unpolished, polished, and textured—are offered in popular sizes with TruEdge™ rectified edges. Trim offerings include a cove base, bullnose and cove corner.



Photo features Taupe Technique 24 x 24 polished on floor; Taupe Technique 24 x 24 unpolished and Taupe Technique 12 x 24 textured on wall.

FIELD TILE



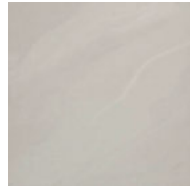
Structure Cream MT01
Unpolished



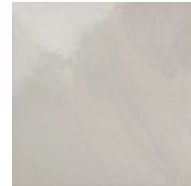
Structure Cream MT01
Polished



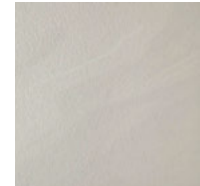
Structure Cream MT01
Textured



Taupe Technique MT04
Unpolished



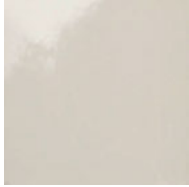
Taupe Technique MT04
Polished



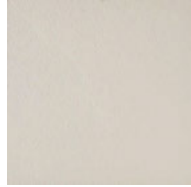
Taupe Technique MT04
Textured



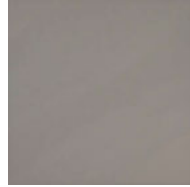
Process Beige MT02
Unpolished



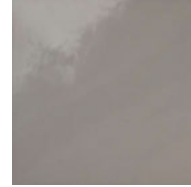
Process Beige MT02
Polished



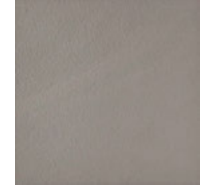
Process Beige MT02
Textured



Khaki Approach MT05
Unpolished



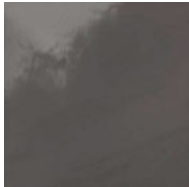
Khaki Approach MT05
Polished



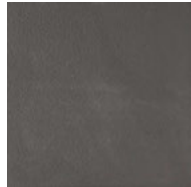
Khaki Approach MT05
Textured



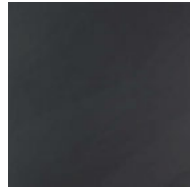
Strategic Brown MT03
Unpolished



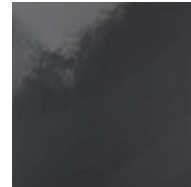
Strategic Brown MT03
Polished



Strategic Brown MT03
Textured



System Sable MT06
Unpolished



System Sable MT06
Polished

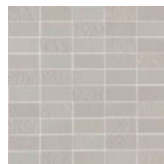


System Sable MT06
Textured

MOSAIC TILE



Structure Cream MT01 - 12 x 12 Mosaic; 12 x 24 Mosaic



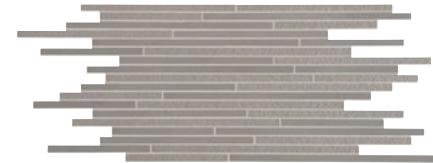
Taupe Technique MT04 - 12 x 12 Mosaic; 12 x 24 Mosaic



Process Beige MT02 - 12 x 12 Mosaic; 12 x 24 Mosaic



Khaki Approach MT05 - 12 x 12 Mosaic; 12 x 24 Mosaic



Strategic Brown MT03 - 12 x 12 Mosaic; 12 x 24 Mosaic



System Sable MT06 - 12 x 12 Mosaic; 12 x 24 Mosaic



SIZES, SHADE VARIATION & PRICING



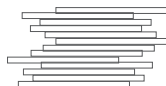
24 x 24 Field Tile
(23-3/8" x 23-3/8")
(59.5 cm x 59.5 cm)



12 x 24 Field Tile
(11-5/8" x 23-3/8")
(29.65 cm x 59.5 cm)



12 x 12 Mosaic Tile
(11-5/8" x 11-5/8")
(29.65 cm x 29.65 cm)



12 x 24 Mosaic Tile
(11-5/8" x 23-3/8")
(29.65 cm x 59.5 cm)



High
(V3)

Tile Thickness: 3/8"

Recommended Grout Joint: 1/8" Floor (3/16" when rectangular sizes are used in a staggered brick-joint pattern, or when multiple sizes are used in a modular pattern, overlap not to exceed 33%)

Relative Pricing: High

TRIM



Bullnose
S-43C9
3 x 12



Cove Base
S-36C9
6 x 12



Cove Base Corner
SC-36C9
1 x 6

Bullnose and cove base trim are intended to coordinate with floor field tile in the normal 90-degree installation position.

Photo features Taupe Technique 24 x 24 polished on floor.

PERFORMANCE CHARACTERISTICS

	Dynamic C.O.F. Wet	Moisture Absorption	Breaking Strength	MOH's	Chemical Resistance
Unpolished/Textured	≥ 0.42	< 0.5%	> 450 lbs.	8.0	Resistant
Polished	< 0.42	< 0.5%	> 450 lbs.	8.0	Resistant

A DCOF value of ≥ 0.42 is the new standard for tiles specified for commercial application in standard A137.1–2012, Section 9.6. It replaces the SCOF value of ≥ 0.60 referenced in ASTM C1028. For more information on the correlation between the two values and about the DCOF AcuTest™, visit www.americanolean.com/dcof.

NOTES

Manufacturer Warning: These tiles have a dynamic coefficient of friction less than 0.42 as measured by the DCOF AcuTest™ method. Tiles with DCOF AcuTest™ values less than 0.42 are not recommended for use in areas with wet or slippery conditions. If such tiles are used as a walking surface where water, ice, oil, grease and/or other substances are present, such a condition could cause a reduction in foot traction and become unexpectedly slippery resulting in a fall or personal injury. See ANSI standard A137.1 section 6.2.2.1.10, available at www.tileusa.com.

Since there is shade variation in all products, the tile and trim supplied for your particular installation may not match these samples. Final selection should be made from actual tiles and trim and not from tile and trim samples or color reproductions. Manufactured in accordance with ANSI A137.1 standards.

Water, oil, grease etc. create slippery conditions. Floor applications with exposure to these conditions require extra caution in product selection. Not for use on ramps.

For additional information, refer to Factors to Consider at www.americanolean.com/CommercialFactors.

APPLICATION

	INTERIOR			EXTERIOR	
	Residential	Light Commercial	Commercial	Residential	Commercial
Floors/Patios: Covered & Uncovered	●	●	●	● *	● **
Walls/ Backsplashes	●	●	●	●	●
Countertops	●	●	●	●	●
Pool Linings	●	●	●	●	●
Pool Deckings	● **	● **	● **	● **	● **

Textured surface

Suitable for exterior floor applications in freezing and non-freezing climates when proper installation methods are followed.

Unpolished surface

Suitable for exterior wall applications in freezing and non-freezing climates when proper installation methods are followed.

* Unpolished & Textured surfaces.

** Textured surface only.

Cleaning Procedures

Remove loose dust and dirt with a damp cloth or sponge
Remove cleaning solution with a clean, damp sponge or mop

Installation Methods Backing Materials

Concrete
Exterior grade plywood
Cementitious backer board

Setting

Standard thin-set mortar
Epoxy

Grouting

Sanded grout
Sanded cement grout
Epoxy grout



Naturally, many of our products can help you earn LEED™ credits. Visit aogreenworks.com for detailed information.



americanolean.com

888.AOT.TILE