



THEORETICAL™

COLORBODY™ PORCELAIN & GLAZED CERAMIC MOSAIC WITH REVEAL IMAGING®

FLOOR



AMERICAN OLEAN®
PROVEN IN TILE™

AMERICANOLEAN.COM

THEORETICAL™

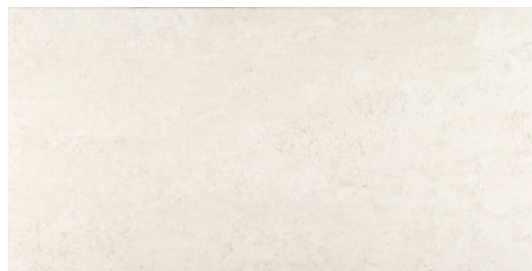
With a nod to minimalist simplicity, Theoretical by American Olean® is inspired by the modern, industrial look of cement. Reimagined with subtle graphic variation for added richness and depth, its versatility is perfect for commercial or urban residential applications. Available in 10 neutral hues to complement a range of color palettes and patterns, Theoretical offers a solid foundation with endless design potential.

Cover photo features Theoretical Creative Gray 12 x 24 on the floor and Bricktown™ Arctic Bend 2 x 8 on the wall.
Above photo features Theoretical Absolute Brown 12 x 24 on the floor.

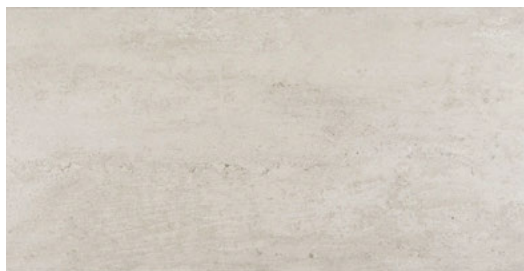
THEORETICAL™

COLORBODY™ PORCELAIN & GLAZED CERAMIC MOSAIC WITH REVEAL IMAGING®

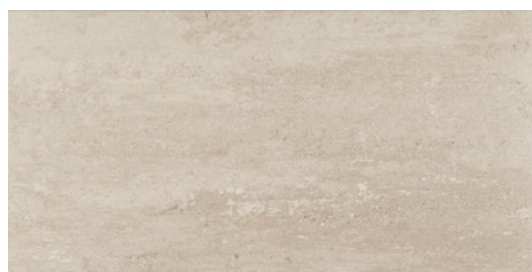
FLOOR TILE



WHIMSICAL WHITE TH90



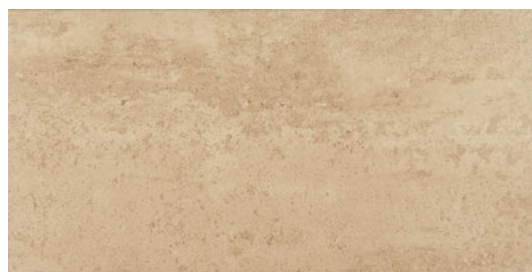
LOGICAL GRAY TH95



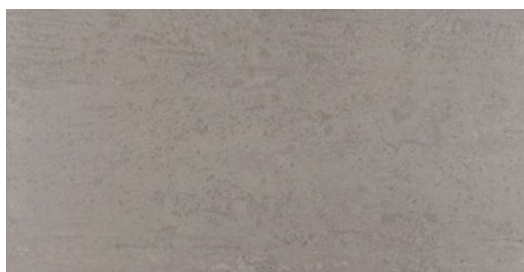
FUNDAMENTAL GRAY TH94



IDEAL BEIGE TH91



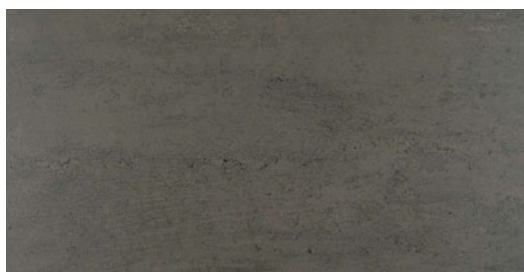
TRUE BEIGE TH92



CREATIVE GRAY TH96



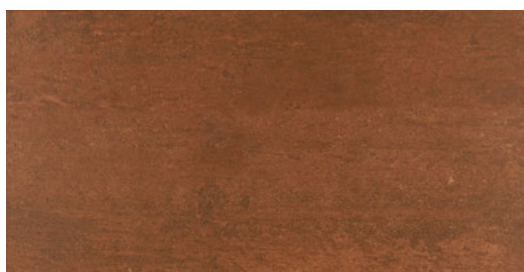
ABSOLUTE BROWN TH93



IMAGINATIVE GRAY TH97



ABSTRACT BLACK TH99

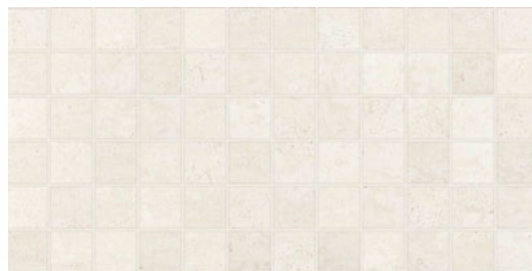


DEEP COPPER TH98

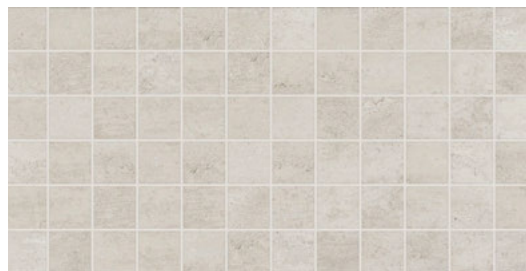
THEORETICAL™

COLORBODY™ PORCELAIN & GLAZED CERAMIC MOSAIC WITH REVEAL IMAGING®

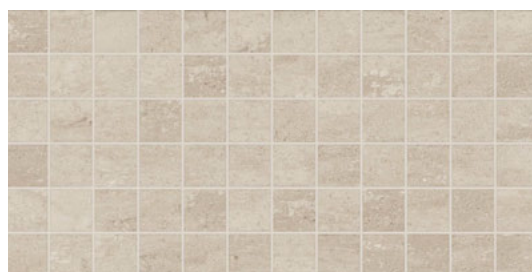
GLAZED CERAMIC MOSAIC



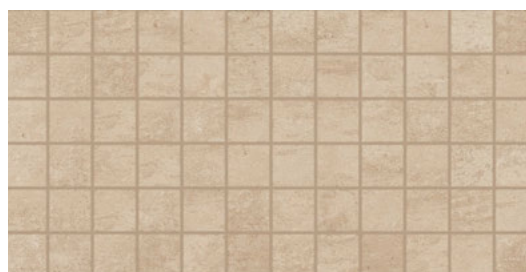
WHIMSICAL WHITE TH90



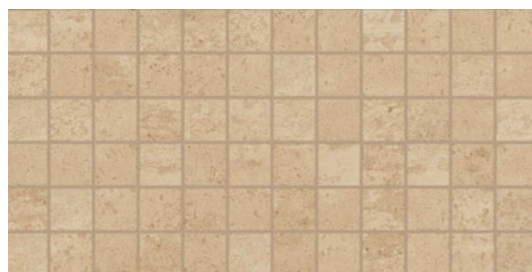
LOGICAL GRAY TH95



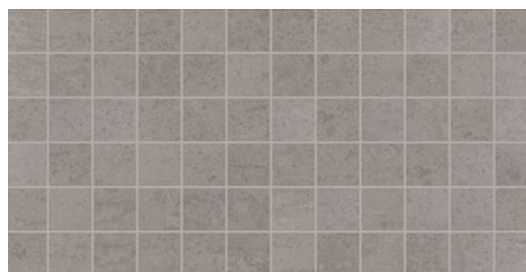
FUNDAMENTAL GRAY TH94



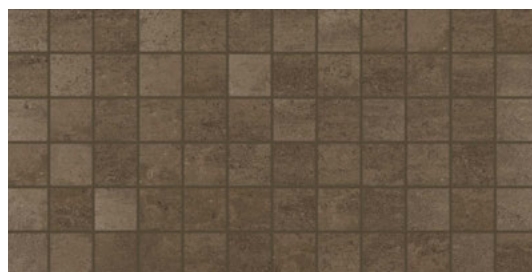
IDEAL BEIGE TH91



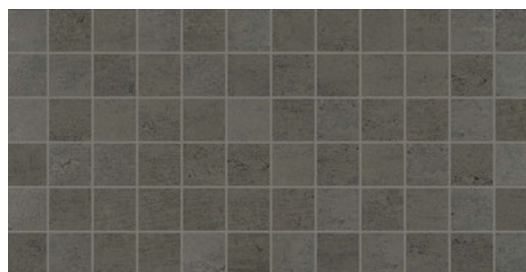
TRUE BEIGE TH92



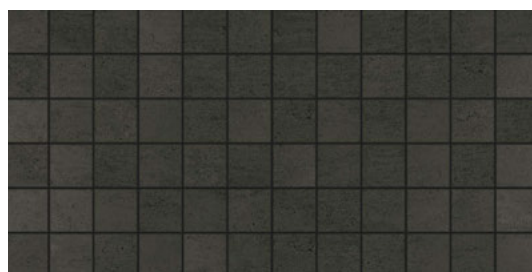
CREATIVE GRAY TH96



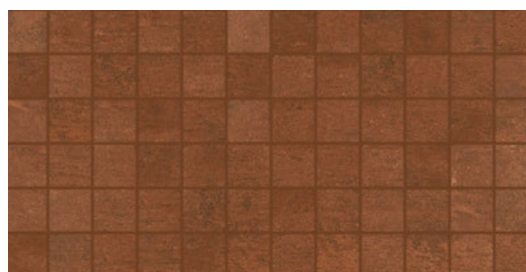
ABSOLUTE BROWN TH93



IMAGINATIVE GRAY TH97



ABSTRACT BLACK TH99




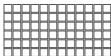


DEEP COPPER TH98


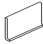

THEORETICAL™

COLORBODY™ PORCELAIN & GLAZED CERAMIC MOSAIC WITH REVEAL IMAGING®

SIZES

			THICKNESS	SQ. FT./ CARTON	PIECES/ CARTON
	24 x 24 Floor Tile *	(23-5/8" x 23-5/8") (59.44 cm x 59.44 cm)	3/8"	15.20	4
	12 x 24 Floor Tile *	(11-5/8" x 23-5/8") (29.56 cm x 59.44 cm)	3/8"	15.12	8
	6 x 24 Floor Tile *	(6" x 23-5/8") (14.63 cm x 59.44 cm)	3/8"	10.23	11
	2 x 2 Mosaic ■ □	(12" x 24" Sheet) (30.48 cm x 60.96 cm Sheet)	1/4"	24.00	12

TRIM

DESCRIPTION	NUMBER	SIZE	SHAPE
Floor Bullnose	P-43C9	3 x 12	
Cove Base	P-36C9TB	6 x 12	
Cove Base Outcorner	PC-36C9TB	1 x 6	

Floor bullnose and cove base trim are intended to coordinate with floor tile in the standard 90-degree installation position. Cove base and cove corner trim are suitable for non-freezing climates only.

* Modular sizes ■ Dot-Mounted □ Ceramic body * Available via Linear Express

INSTALLATION & PRICING

RECOMMENDED GROUT JOINT:

Floor: 1/8" (3/16" when multiple sizes are installed in a modular pattern, and/or when installing tile with a length 15" or greater in a staggered brick-joint pattern; overlap should not exceed 33%.)

Mosaic: 1/8"

RELATIVE PRICING: Medium

SHADE VARIATION



PERFORMANCE CHARACTERISTICS

	ASTM#	FLOOR RESULT	MOSAIC RESULT
Water Absorption	C373	< 0.5%	< 3.0%
Breaking Strength	C648	> 275 lbs	> 250 lbs
Scratch Hardness	MOHS	8.0	8.0
Chemical Resistance	C650	Resistant	Resistant
Abrasion Resistance	C1027	-N/A-	4

For additional information on test results, visit us at: americanolean.com/information/TestResults.

USAGE

FLOORS	WALLS	COUNTERTOPS
F	W	C

APPLICATIONS

	TARGET DCOF WET	SUITABLE
Dry & Level – Interior Floor	N/A	●
Wet & Level – Interior Floor	≥ 0.42	●
Shower Floors (Residential or Light Commercial)	≥ 0.42	●*
Exterior Floor Applications (including pool decking & other wet areas with minimal footwear)	≥ 0.60	
Ramps & Inclines	≥ 0.65	
Walls/Backsplashes	N/A	●
Countertops	N/A	●
Pool Linings	N/A	●*

A DCOF value of ≥ 0.42 is the standard for tiles specified for level interior spaces expected to be walked upon when wet, as stated in ANSI A137.1-2012, Section 9.6. For more information about DCOF and the DCOF AcuTest™, visit americanolean.com/DCOF.

APPLICATION NOTES:

Floor tile suitable for exterior applications in freezing and non-freezing climates, when proper installation methods are followed.

Mosaic tile suitable for exterior applications in non-freezing climates, when proper installation methods are followed.

* Mosaic tile only

NOTES

Since there are variations in all fired ceramic and natural products, tile and trim supplied for your particular installation may not match samples. Final confirmation should be made from actual tiles and trim prior to installation. Manufactured in accordance with ANSI A137.1 standards.

Not for use on ramps. Water, oil, grease, improper drainage and certain footwear can create slippery conditions. Floor applications expected to be exposed to these conditions require extra caution in product selection.

For additional information refer to "Factors to Consider" at: americanolean.com/Factors.

Special consideration needs to be given when installing tiles greater than 15 inches. Please refer to americanolean.com/LargeTiles for more information.

Special care should be taken when grouting with dark pigmented colors. A grout release is recommended to prevent finely powdered pigments from lodging in the pores of the surface. Use of a latex modified thin-set is recommended for installation.



POST-CONSUMER
RECYCLED MATERIALS



REVEAL IMAGING®



PRE-CONSUMER
RECYCLED MATERIALS



TRU-EDGE™



MADE IN THE U.S.A.



CERTIFIED
PORCELAIN
TILE

All or select items within this series meet the requirements for these qualifications. For more information visit americanolean.com.



Naturally, many of our products can help you earn LEED™ credits.

888.AOT.TILE

©2017 AMERICAN OLEAN (06/17)



AMERICAN OLEAN®
PROVEN IN TILE™