

RELEVANCE™

COLORBODY™ PORCELAIN

FLOOR



AMERICAN OLEAN®
PROVEN IN TILE™

AMERICANOLEAN.COM

RELEVANCE™

Relevance, a fine, ColorBody™ porcelain, reflects the subtle inspiration of natural stone combined with a durable, compact surface. In both unpolished and textured finishes, Relevance has the versatility and functionality commercial installations demand along with beauty and elegance to meet residential customers' discriminating taste. Five on-trend color options can be used on indoor floors and exterior walls, providing endless design and application possibilities.

Photo features Germane Gray in 24 x 24 on the floor and 12 x 24 on the wall.

RELEVANCE™

COLORBODY™ PORCELAIN

UNPOLISHED FIELD TILE



CONTEMPORARY CREAM RL01



TIMELY BEIGE RL02



GERMANE GRAY RL03



ESSENTIAL CHARCOAL RL04



EXACT BLACK RL05

TEXTURED FIELD TILE



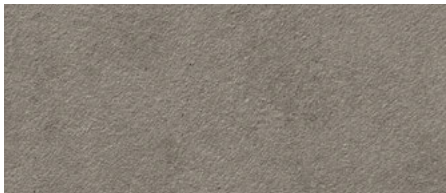
CONTEMPORARY CREAM RL01



TIMELY BEIGE RL02



GERMANE GRAY RL03



ESSENTIAL CHARCOAL RL04



EXACT BLACK RL05

2 x 1 BRICK-JOINT MOSAIC



CONTEMPORARY CREAM RL01



TIMELY BEIGE RL02



GERMANE GRAY RL03



ESSENTIAL CHARCOAL RL04



EXACT BLACK RL05

RELEVANCE™

COLORBODY™ PORCELAIN

SIZES, SHADE VARIATION & PRICING



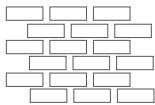
**24 x 48
FIELD TILE**
(23-7/16" x 46-15/16")
(59.50 cm x 119.20 cm)



**24 x 24
FIELD TILE**
(23-7/16" x 23-7/16")
(59.50 cm x 59.50 cm)



**12 x 24
FIELD TILE**
(11-11/16" x 23-7/16")
(29.65 cm x 59.50 cm)



**2 x 1 BRICK-JOINT
MOSAIC**
(23-7/16" x 11-11/16" Sheet)
(59.50 cm x 29.65 cm Sheet)



**HIGH
(V3)**

TILE THICKNESS: 7/16"
RECOMMENDED GROUT JOINT: 1/8" (3/16" when multiple sizes are installed in a modular pattern, and when rectangular size is installed in a staggered brick-joint pattern; overlap should not exceed 33%)
RELATIVE PRICING: High

PERFORMANCE CHARACTERISTICS

	MOISTURE ABSORPTION	BREAKING STRENGTH	MOHS	CHEMICAL RESISTANCE
Unpolished	< 0.5%	> 450 lbs.	8.0	Resistant
Textured	< 0.5%	> 450 lbs.	8.0	Resistant

CLEANING PROCEDURES

- Remove loose dust and dirt with a damp cloth or sponge
- Use a neutral, non-abrasive cleaner suitable for ceramic tile
- Remove cleaning solution with a clean, damp sponge or mop

INSTALLATION METHODS BACKING MATERIALS

- Concrete
- Exterior grade plywood
- Cementitious backer board

SETTING

- Latex modified thin-set
- Epoxy

GROUTING

- Sanded grout
- Sanded cement grout
- Epoxy grout

Cover photo features Relevance Germane Gray in 24 x 48 Unpolished on the floor.

NOTES

SPECIAL INSTALLATION REQUIREMENT: For proper bonding, medium bed mortar should be utilized in installing tiles with a dimensional length size greater than 20 x 20, large rectangles or tiles with greater dimensional thickness than normal. Back buttering tiles of this nature in the installation process will also assure proper coverage for bonding.

Since there is shade variation in all fired porcelain products, the tile and trim supplied for your particular installation may not match these samples. Final selection should be made from actual tiles and trim and not from tile and trim samples or color reproductions. Manufactured in accordance with ANSI A137.1 standards.

Special care should be taken when grouting with dark pigmented colors. A grout release is recommended to prevent finely powdered pigments from lodging in the pores of the surface. Use of a latex modified thinset is recommended for installation.

Water, oil, grease, etc. create slippery conditions. Floor applications with exposure to these conditions require extra caution in product selection.

For additional information, refer to "Factors to Consider" at <http://americanolean.com/factors-to-consider.cfm>.

TRIM



BULLNOSE
S-43C9
3 x 12



COVE BASE
S-36C9T
6 x 12



COVE CORNER
SC-36C9T
6 x 1

Bullnose, Cove Base and Cove Corner trim are intended to coordinate with floor field tile in the standard 90-degree installation position.

FLOOR APPLICATIONS

	TARGET DCOF WET	SUITABLE
Dry & Level - Interior	N/A	●
Wet & Level - Interior	≥ 0.42	●
Exterior Applications; Pool Decking & Other Wet Areas with Minimal Footwear	≥ 0.60	○
Ramps & Inclines	≥ 0.65	○

A DCOF value of ≥ 0.42 is the new standard for tiles specified for commercial application in standard A137.1-2012, Section 9.6. It replaces the SCOF value of ≥ 0.60 referenced in ASTM C1028. For more information on the correlation between the two values and about the DCOF AcuTest™, visit www.americanolean.com/dcof.

OTHER APPLICATIONS

	SUITABLE
Walls/Backsplashes	●
Countertops	●
Pool Linings	○

APPLICATION NOTES:

Floor tile suitable for exterior applications in freezing and non-freezing climates when proper installation methods are followed.

Mosaics suitable for exterior applications in non-freezing climates only when proper installation methods are followed.

AMERICAN OLEAN greenworks™
ENVIRONMENTAL LEADERSHIP THAT WORKS

Naturally, many of our products can help you earn LEED™ credits.

888.AOT.TILE

©2016 AMERICAN OLEAN (01/16)



AMERICAN OLEAN®
PROVEN IN TILE™