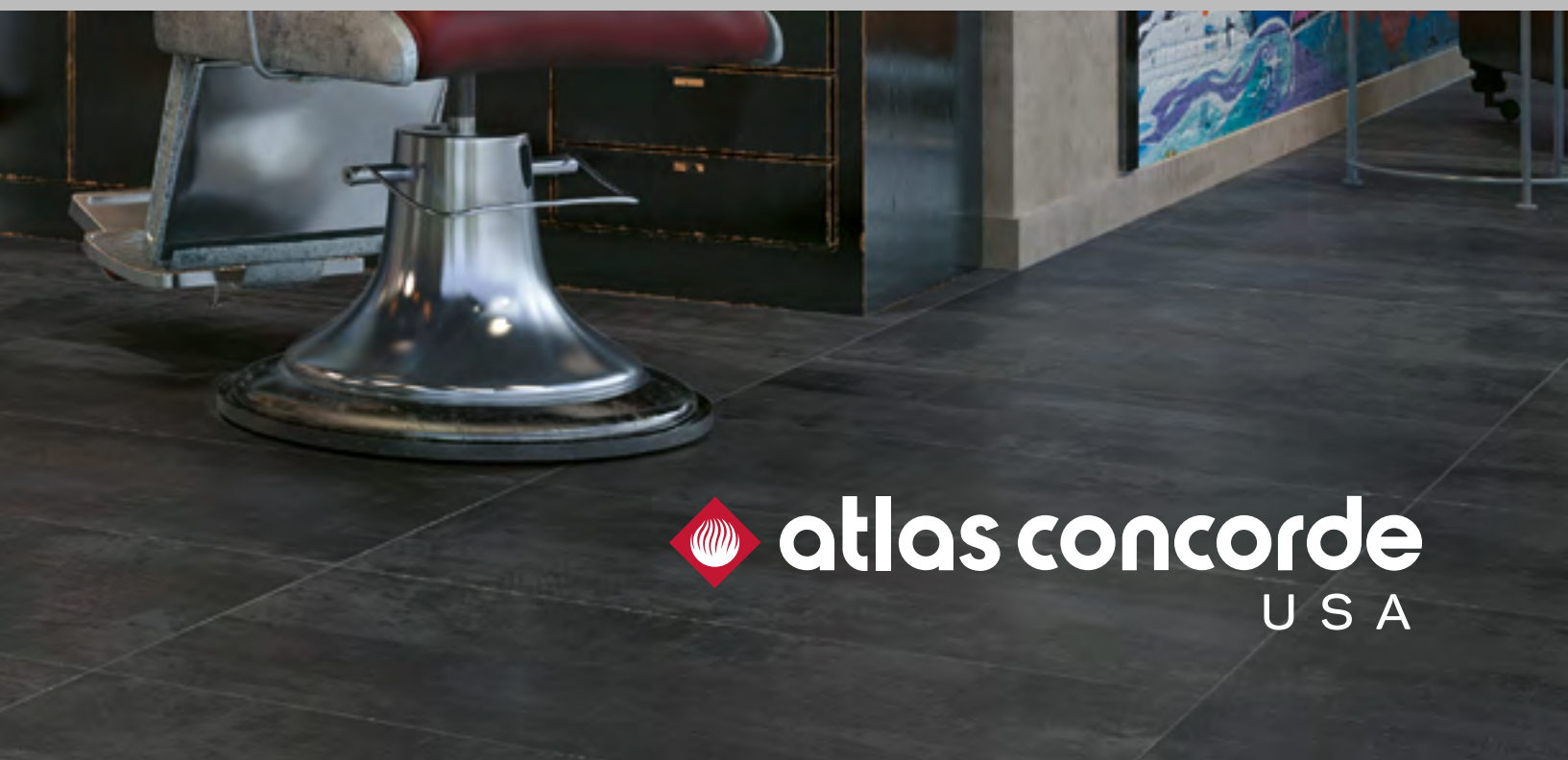


STYLED IN ITALY. PROUDLY AMERICAN.

FORGE



atlas concorde
USA



FORGE

Industrial and metropolitan, a fine combination of treated metallic shades represents a precious ally for modern and urban environments. Grease stains, corrosion and oxidation add a lived and consumed character, providing a highly realistic effect.



FORGE

Forge Aluminum 11^{3/4}" x 23^{5/8}" - 30x60 cm

Forge Aluminum Bullnose 3" x 24" - 7.2x60 cm

Forge Steel 17^{3/4}" x 35^{3/8}" - 45x90 cm

COLORLED BODY PORCELAIN STONEWARE



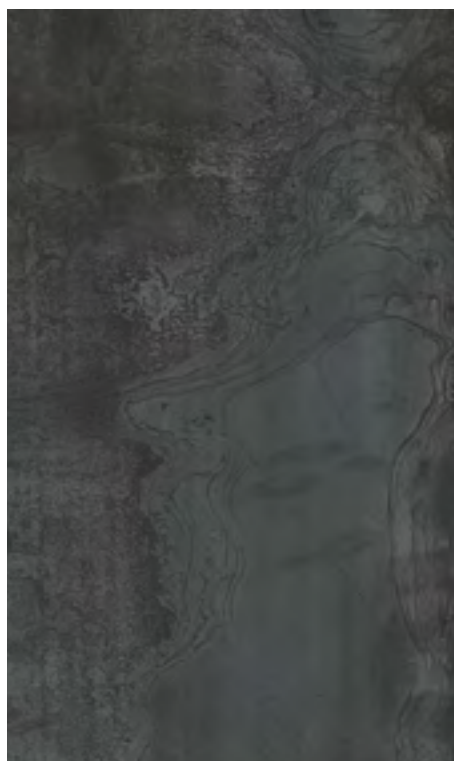
Tin



Aluminum



Iron



Steel



FORGE

Forge Aluminum Brick Mosaic $11\frac{3}{4}'' \times 11\frac{3}{4}''$ - 30x30 cm
Forge Tin $11\frac{3}{4}'' \times 23\frac{5}{8}''$ - 30x60 cm

FORGE

COLORED BODY PORCELAIN STONEWARE



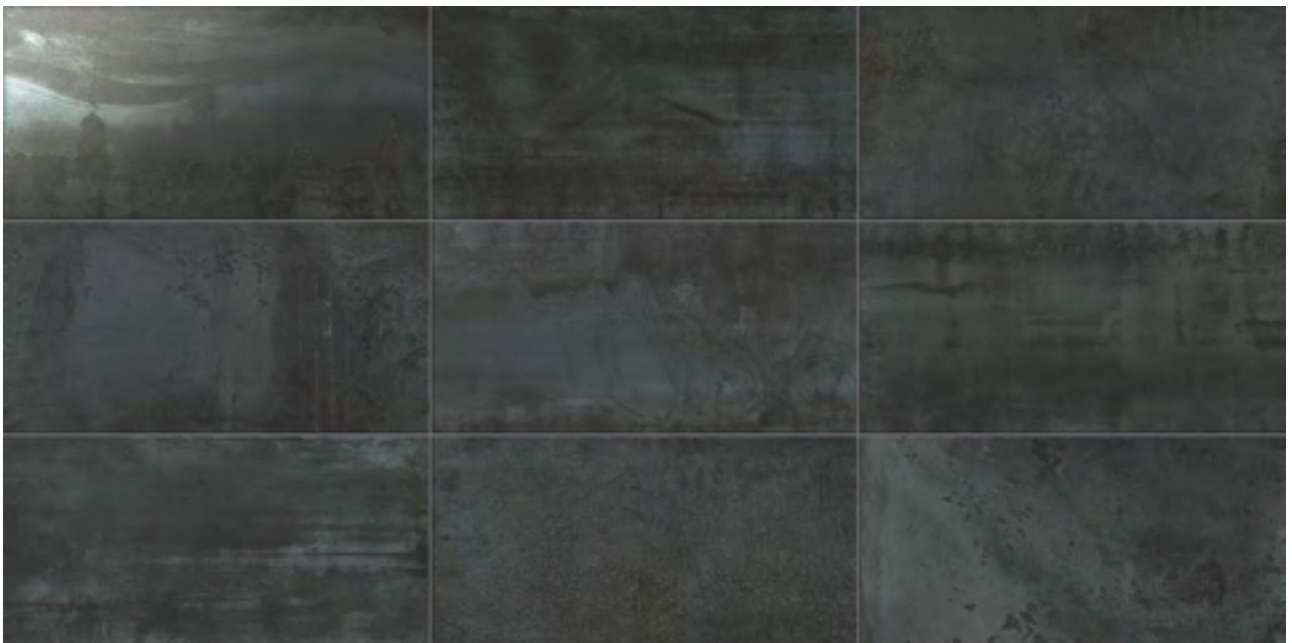
Tin



Aluminum



Iron



Steel

FORGE

COLORLED BODY PORCELAIN STONEWARE

REDEEM

Redeem Ash 7^{6/8}"x39^{3/8}" - 20x100 cm

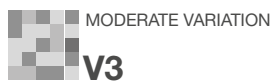
FORGE

Forge Steel Cove Base 6"x12" - 15x30 cm

Forge Steel 17^{3/4}"x35^{3/8}" - 45x90 cm

Forge Iron 17^{3/4}"x35^{3/8}" - 45x90 cm





Compliant with standards ANSI A137.1-2012



FORGE

Forge Aluminum $11\frac{3}{4}'' \times 23\frac{5}{8}''$ - 30x60 cm
 Forge Iron $11\frac{3}{4}'' \times 23\frac{5}{8}''$ - 30x60 cm
 Forge Rust Listello $1\frac{1}{8}'' \times 23\frac{5}{8}''$ - 3x60 cm
 Forge Iron Mosaic $11\frac{3}{4}'' \times 11\frac{3}{4}''$ - 30x30 cm
 Forge Spark Listello $1\frac{1}{8}'' \times 23\frac{5}{8}''$ - 3x60 cm
 Forge Spark Dot $1\frac{1}{8}'' \times 1\frac{1}{8}''$ - 3x3 cm

FORGE

COLORLED BODY PORCELAIN STONEWARE



FORGE

Forge Aluminum Brick Mosaic 11^{3/4}"x11^{3/4}" - 30x30 cm



MODERATE VARIATION

V3

Compliant with standards ANSI A137.1-2012



FORGE

Forge Aluminum 11^{3/4}"x23^{5/8}" - 30x60 cm

Forge Aluminum Bullnose 3"x24" - 7.2x60 cm

Forge Steel 17^{3/4}"x35^{3/8}" - 45x90 cm

FORGE

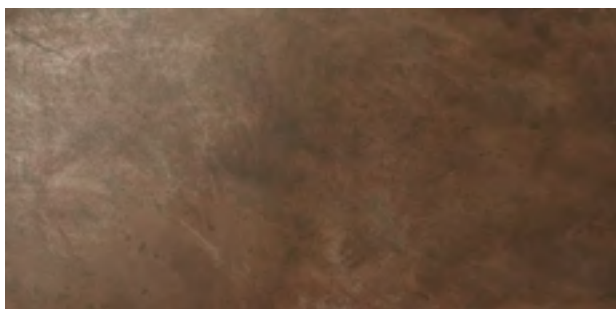
SIZE - THICKNESS | $11\frac{3}{4}'' \times 23\frac{5}{8}''$ - 30x60 cm / $17\frac{3}{4}'' \times 35\frac{3}{8}''$ - 45x90 cm $\frac{7}{8}''$ 9 mm FINISH | MATTE



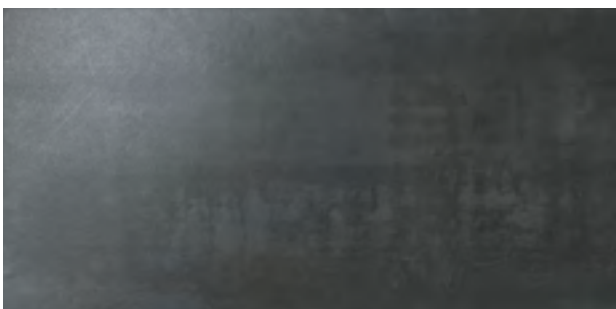
FORGE Tin
 $17\frac{3}{4}'' \times 35\frac{3}{8}''$ - 45x90 cm - Rectified



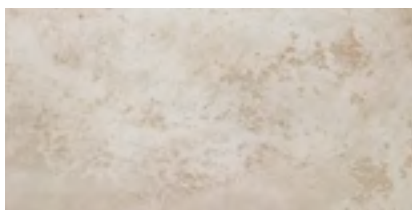
FORGE Aluminum
 $17\frac{3}{4}'' \times 35\frac{3}{8}''$ - 45x90 cm - Rectified



FORGE Iron
 $17\frac{3}{4}'' \times 35\frac{3}{8}''$ - 45x90 cm - Rectified



FORGE Steel
 $17\frac{3}{4}'' \times 35\frac{3}{8}''$ - 45x90 cm - Rectified



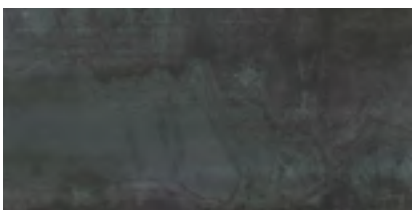
FORGE Tin
 $11\frac{3}{4}'' \times 23\frac{5}{8}''$ - 30x60 cm



FORGE Aluminum
 $11\frac{3}{4}'' \times 23\frac{5}{8}''$ - 30x60 cm



FORGE Iron
 $11\frac{3}{4}'' \times 23\frac{5}{8}''$ - 30x60 cm



FORGE Steel
 $11\frac{3}{4}'' \times 23\frac{5}{8}''$ - 30x60 cm



FORGE Rust Listello
 $1\frac{1}{8}'' \times 23\frac{5}{8}''$ - 3x60 cm



FORGE Rust Dot
 $1\frac{1}{8}'' \times 1\frac{1}{8}''$ - 3x3 cm



FORGE Spark Listello
 $1\frac{1}{8}'' \times 23\frac{5}{8}''$ - 3x60 cm



FORGE Spark Dot
 $1\frac{1}{8}'' \times 1\frac{1}{8}''$ - 3x3 cm



MODERATE VARIATION

V3

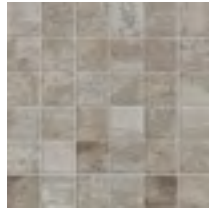
Compliant with standards ANSI A137.1-2012



MOSAICS



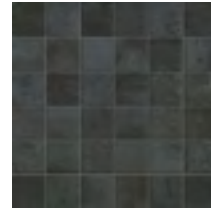
FORGE Tin Mosaic
11^{3/4}"x11^{3/4}" - 30x30 cm
(Mosaic 2"x2")



FORGE Aluminum Mosaic
11^{3/4}"x11^{3/4}" - 30x30 cm
(Mosaic 2"x2")



FORGE Iron Mosaic
11^{3/4}"x11^{3/4}" - 30x30 cm
(Mosaic 2"x2")



FORGE Steel Mosaic
11^{3/4}"x11^{3/4}" - 30x30 cm
(Mosaic 2"x2")



FORGE Tin Brick Mosaic
11^{3/4}"x11^{3/4}" - 30x30 cm
(Brick Mosaic 1.5"x3")



FORGE Aluminum Brick Mosaic
11^{3/4}"x11^{3/4}" - 30x30 cm
(Brick Mosaic 1.5"x3")



FORGE Iron Brick Mosaic
11^{3/4}"x11^{3/4}" - 30x30 cm
(Brick Mosaic 1.5"x3")



FORGE Steel Brick Mosaic
11^{3/4}"x11^{3/4}" - 30x30 cm
(Brick Mosaic 1.5"x3")

COORDINATING TRIMS



FORGE Tin



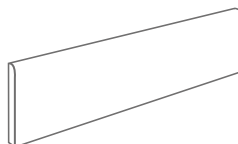
FORGE Aluminum



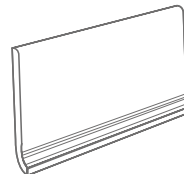
FORGE Iron



FORGE Steel



Bullnose
3"x 24" - 7.2x60 cm



Cove base
6"x12" - 15x30 cm



Every Atlas Concorde USA porcelain stoneware collection is PTCA Certified. Under the program, established jointly by the Porcelain Tile Certification Agency (PTCA) and the Ceramic Tile Distributors Association (CTDA), manufacturers can “prove” their product is really porcelain (meeting the water absorption criteria of the American national standard - ASTM C373).



LEED (Leadership in Energy and Environmental Design) is a rating system created to encourage the construction of “green” buildings. Developed by the US Green Building Council and internationally recognized, it points out the necessary requirements to build eco-compatible projects, capable of functioning in a sustainable and autonomous way in terms of energy consumption as well as having a low environmental impact throughout their entire life-cycle. Atlas Concorde USA is a member of the US Green Building Council.



Atlas Concorde USA products are low-emitting materials with zero emission of volatile organic compounds (VOC). This can contribute to the awarding of 1 LEED credit.



Atlas Concorde USA is a member of TCNA, a trade association representing manufacturers of ceramic tile, tile installation materials, tile equipment, raw materials, and other tile-related products. The Tile Council is recognized for its leadership role in facilitating the development of North American and international industry quality standards to benefit tile consumers.



The Ceramic Tile Distributors Association (CTDA) is an international association of distributors, manufacturers and allied professionals of ceramic tile and related products. CTDA connects, educates and strengthens tile and stone distributors. Atlas Concorde USA is a member of CTDA.

COLORED BODY PORCELAIN STONEWARE



Compliant with standards ANSI A137.1-2012

SIZE - THICKNESS

11 3/4" x 23 5/8" - 30x60 cm ± 9 mm
17 3/4" x 35 3/8" - 45x90 cm ± 9 mm

FINISH

MATTE



V3

MODERATE VARIATION

While the colors and/or texture present on a single piece of tile will be indicative of the colors and/or texture to be expected on the other tiles, the amount of colors and/or texture on each piece may vary significantly. It is recommended that the range be viewed before selection.

FIELD TILES - Available in all colors

Nominal size (in)	Thickness (mm)	Finish	Rectified edge
11 3/4" x 23 5/8"	9 mm	Matte	-
17 3/4" x 35 3/8"	9 mm	Matte	Yes










MOSAICS AND COORDINATING TRIMS - Available in all colors

	Nominal size (in)	Thickness (mm)	Finish
Mosaic 2"x2"	11 3/4" x 11 3/4"	9 mm	Matte
Brick Mosaic 1.5"x3"	11 3/4" x 11 3/4"	9 mm	Matte
Bullnose 3"x24"	2 7/8" x 23 5/8"	9 mm	Matte
Cove Base 6"x12"	5 7/8" x 11 3/4"	8.5 mm (*)	Matte

Please refer to caliber chart for work sizes.
Close joints are not recommended.

(*): Cove Base thickness is 7 mm on flat top part.

PERFORMANCE & FEATURES

		PROPERTY		ASTM TEST METHOD		Porcelain Tile Specification				FORGE
						Calibrated		Rectified		
						Minimum	Maximum	Minimum	Maximum	
REGULARITY CHARACTERISTICS		Nominal Size	ASTM C499	-3.00%	3.00%	-3.00%	2.00%	Compliant		
		Caliber Range (Variation from average facial dimension of sample)		-0.50% or -0.08 in (-2.0 mm) (*)	0.50% or 0.08 in (2.0 mm) (*)	-0.25% or -0.03 in (-0.8 mm) (*)	0.25% or 0.03 in (0.8 mm) (*)	Compliant		
		Thickness ⁽¹⁾		N/A	Range: 0.40 in (1.02 mm)	N/A	Range: 0.40 in (1.02 mm)	Compliant		
		Wedging	ASTM C502	-0.50% or -0.08 in (-2.0 mm) (*)	0.50% or 0.08 in (2.0 mm) (*)	-0.25% or -0.03 in (-0.8 mm) (*)	0.25% or 0.03 in (0.8 mm) (*)	Compliant		
		Warpage Edge	ASTM C485	-0.75% or -0.09 in (-2.3 mm) (*)	0.75% or 0.09 in (2.3 mm) (*)	-0.40% or -0.05 in (-1.3 mm) ⁽²⁾ or -1.8 mm ⁽³⁾ (*)	0.40% or 0.05 in (1.3 mm) ⁽²⁾ or 1.8 mm ⁽³⁾ (*)	Compliant		
		Warpage Diagonal		-0.50% or -0.08 in (-2.0 mm) (*)	0.50% or 0.08 in (2.0 mm) (*)	-0.40% or -0.07 in (-1.8 mm) (*)	0.40% or 0.07 in (1.8 mm) (*)	Compliant		
				All Porcelain Tiles						
STRUCTURAL CHARACTERISTICS		Water Absorption	ASTM C373	≤ 0.5%				≤ 0.5%		
BULK MECHANICAL CHARACTERISTICS		Breaking strenght	ASTM C648	Average ≥ 250 lbf. (1.11 kN) Individual ≥ 225 lbf. (1.00 kN)				≥ 350 lbf. avg		
PHISICAL PROPERTIES		Bond Strength	ASTM C482	≥ 50 psi (0.34 Mpa)				≥ 100 psi		
THERMAL AND IGROMETRIC CHARACTERISTICS		Resistance to Freeze/Thaw Cycling	ASTM C1026	As Reported				Resistant		
CHEMICAL CHARACTERISTICS		Chemical Resistance	ASTM C650	As Reported				Unaffected		
		Stain Resistance	ASTM C1378	As Reported				Unaffected		
SAFETY CHARACTERISTICS		Dynamic coefficient of friction	DCOF	Requires a minimum value of 0.42 for commercial areas that are likely to be wet				> 0,42 Wet		

(*) Whichever is less

(1) May not apply to textured surfaces or tiles with uneven back patterns.

(2) Whichever is less, for tiles up to 24"x24" (610 mm x 610 mm).

(3) Applies to tiles larger than 24"x24" (610 mm x 610 mm).

Atlas Concorde reserves the right to modify any product without notice and will not be liable for any direct or indirect damage resulting from such modifications. Colors and optical features of the materials illustrated in this catalogue are to be regarded as mere indications. For information and details relating to codes, packaging and weight it is recommended to refer to the latest pricelist.

Atlas Concorde Usa, Inc.
117 Seaboard Lane - Suite 170
Franklin, TN 37067 - USA